

- Introduction

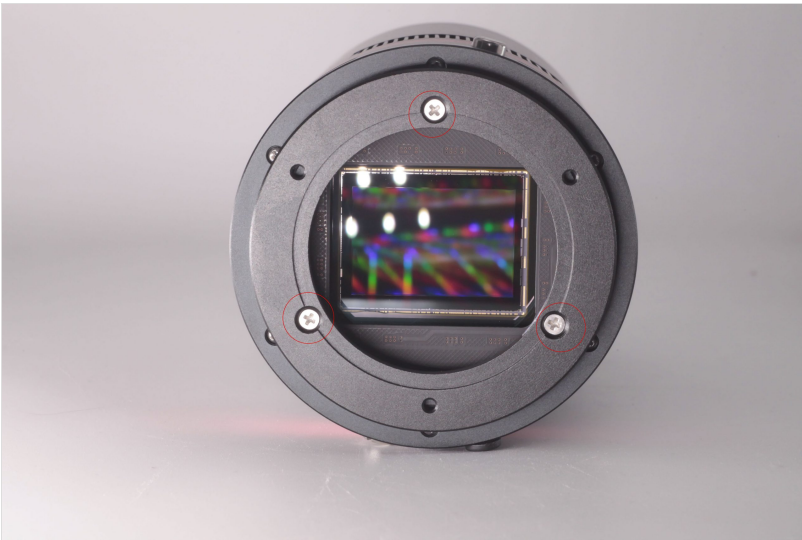
This adapter is designed for connecting QHY600M SBFL and QHYCFW3XL. Since the diameter of the joint part of QHY600M SBFL is different from QHYCFW3XL, we need this adapter to fix them. There're also three 6mm M3 screws and three 8mm M3 screws provided.

By the way, We still recommend the "QHY600+CFW3L" combo unless you've already had CFW3XL, because CFW3L and its 2"*7 filter carousel can meet most of the needs.



- How to Use

Step1: Use three **M3 6mm screws** to fix the cam and adapter with **countersunk holes**. Pay Attention to the position of countersunk threads.



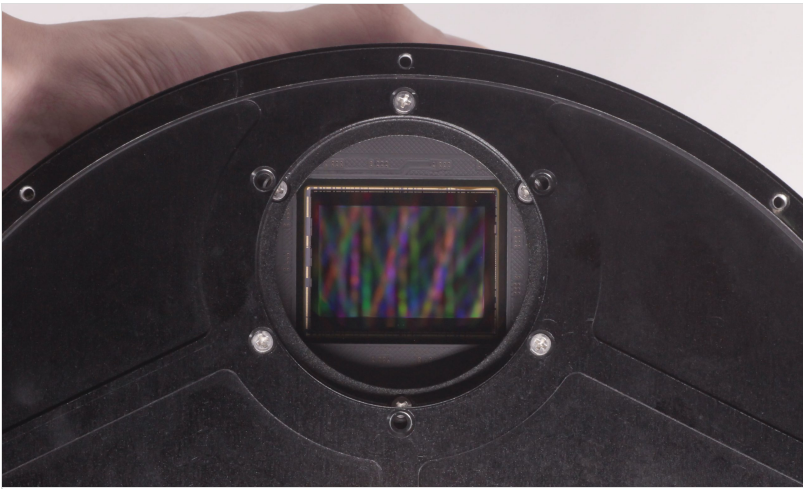
Step2: Open the filter wheel and release four screws which fix filter carousel.



Step3: Release these six screws and remove the default filter wheel adapter.



Step4: Use another three **8mm M3 screws** to fix the filter wheel and adapter



Step5: Install Filter carousel and filters.

