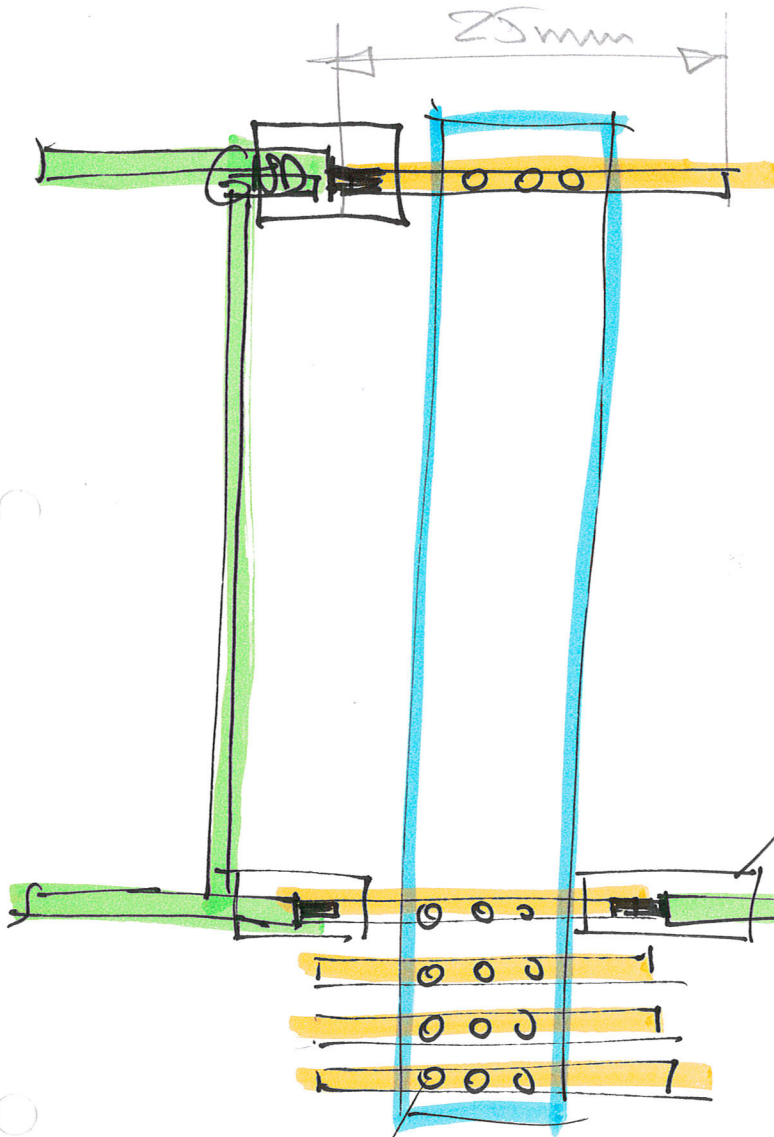


Câblage des climos sur DIN41612



Jaune
GND

$$\begin{array}{r} 25 \\ \times 5 \\ \hline 125 \text{ mm / connect.} \end{array}$$

$\times 10 \text{ connect}$

1250 mm

$= 3 \text{ banes}$

Thermo transparente

Noir -12V AWG

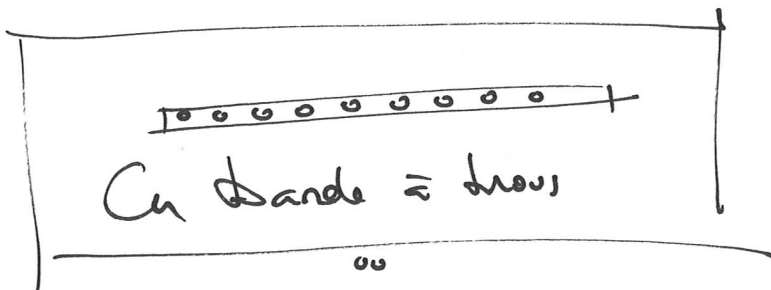
Orange +12V

Rouge +5V

Jaune GND

Soudés

3 pièces



Dis 45 05 40

18.-