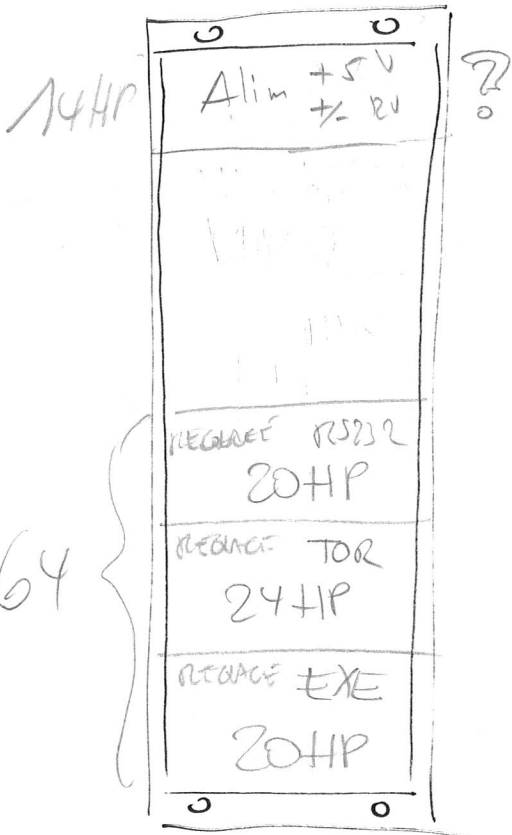
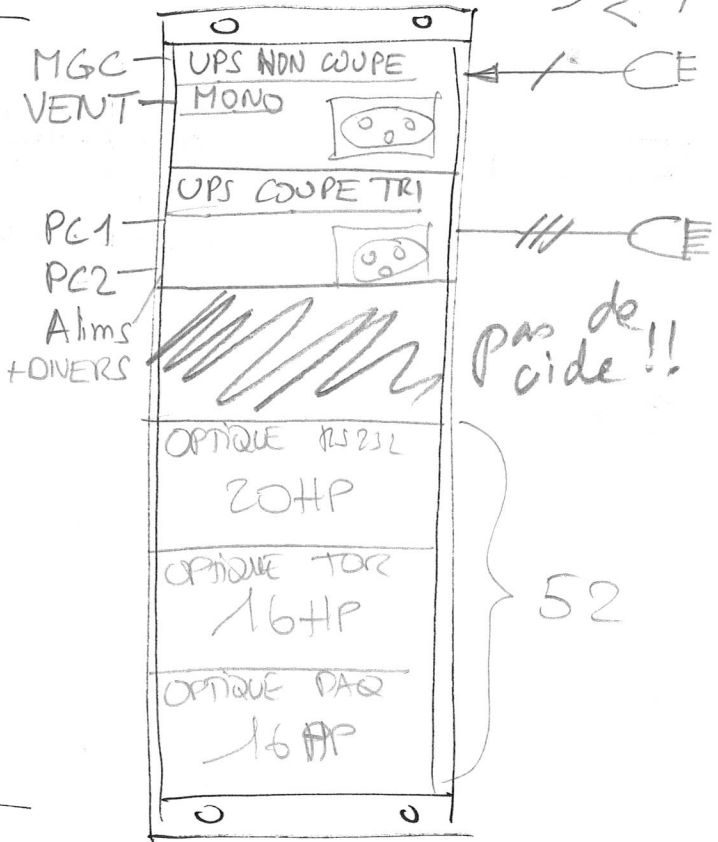


REM

Annexe GAUCHE



Annexe DROITE

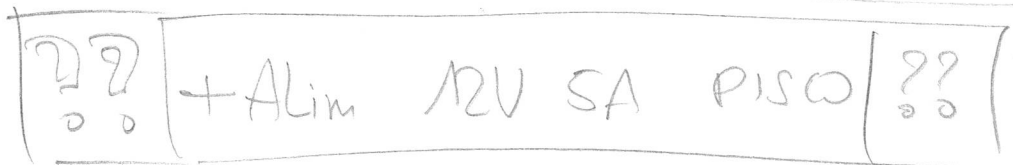


vue AVANT

78HP

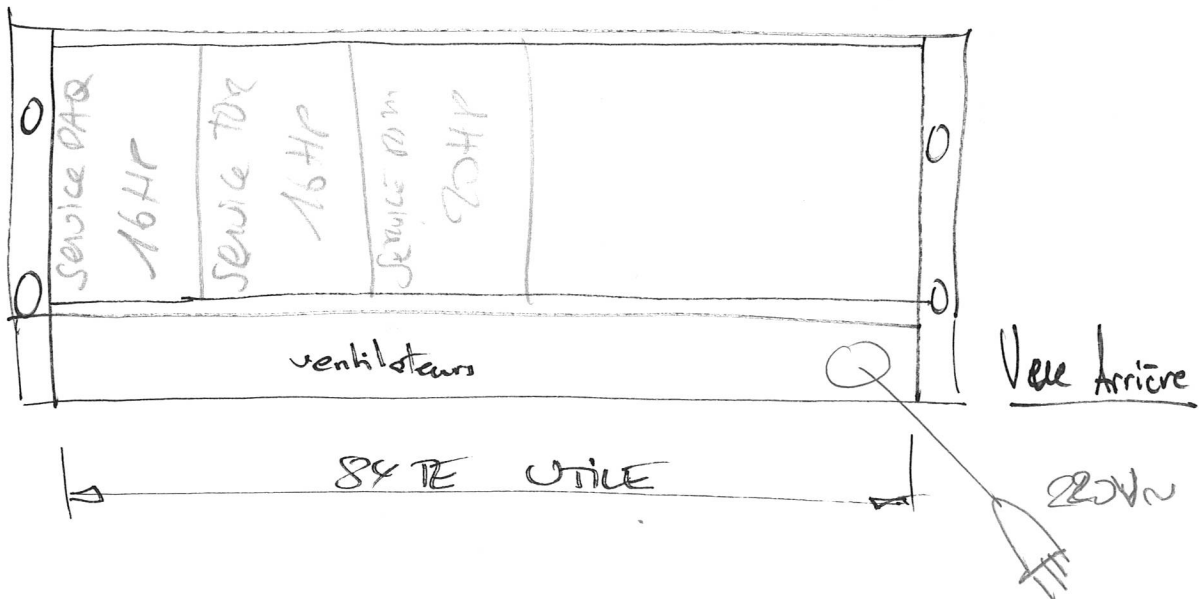
84 - 52 = reste 32HP libre

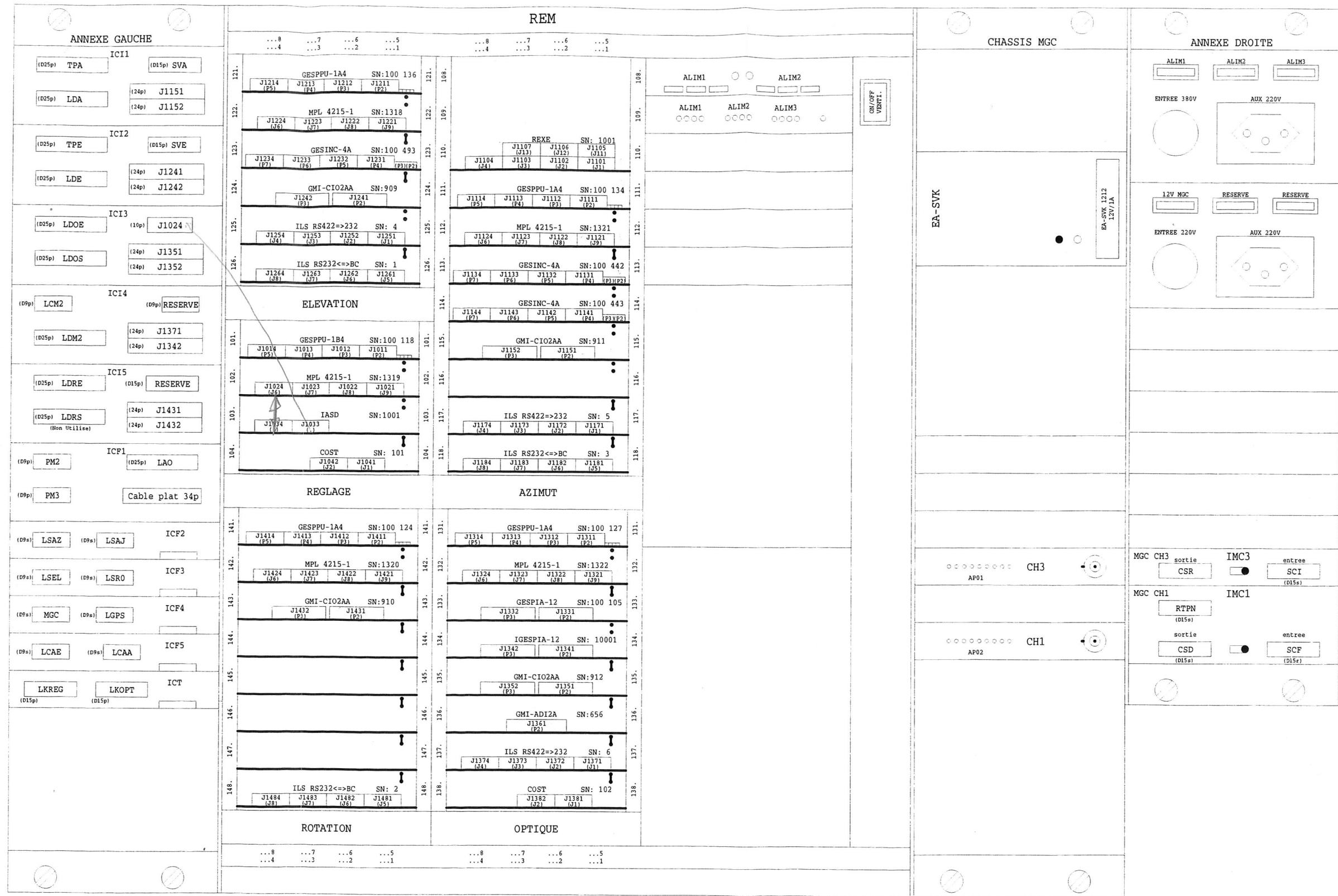
6HP Alim



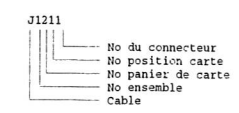
SERVICES

52HP





• Jumper Daisy Chain Line ouvert (signal se propage dans la carte)
 ! Jumper Daisy Chain Line ferme (signal direct en aval sur le bus)



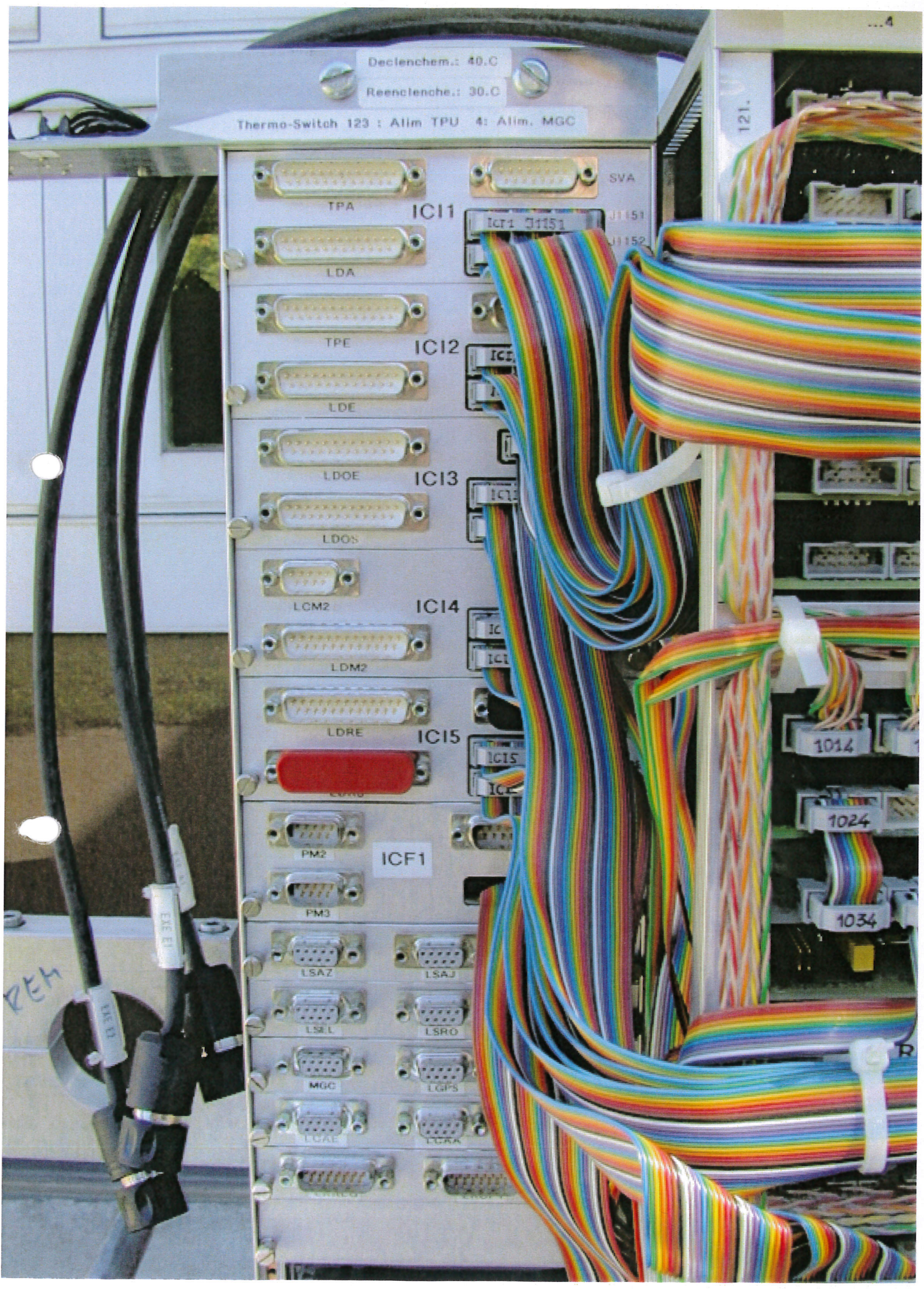
R	Observations :	impREM.sch	Appareil No:	A2
C	Modifications:		Sheet No:	
L			Ech. Dessine	O. Genevay
D			Date	17.05.1995
Q			Page Etude	E. Ischi
.			Revise	10.10.2000
.	OBSERVATOIRE DE GENEVE			T4-REM
.	Tel. (022) 755 26 11 / Fax. (022) 755 39 83			

Chassis REM

Annexe GAUCHE

ANNEXE GAUCHE		
(D25p) TPA ✓	ICI1	(D15p) SVA ✓
(D25p) LDA ✓		(24p) J1151
		(24p) J1152
(D25p) TPE ✓	ICI2	(D15p) SVE ✓
(D25p) LDE ✓		(24p) J1241
		(24p) J1242
(D25p) LDOE ✓	ICI3	(10p) J1024
(D25p) LDOS ✓		(24p) J1351
		(24p) J1352
(D9p) LCM2 ✓	ICI4	(D9p) RESERVE
(D25p) LDM2 ✓		(24p) J1371
		(24p) J1342
(D25p) LDRE ✓	ICI5	(D15p) RESERVE
(D25p) LDRS ✓ <small>(Non Utiliser)</small>		(24p) J1431
		(24p) J1432
(D9p) PM2 ✓	ICF1	(D25p) LAO ✓
(D9p) PM3		Cable plat 34p
	<i>mobilise</i>	
(D9p) LSAZ	(D9p) LSAJ	ICF2
(D9p) LSEL ✓	(D9p) LSRO	ICF3
(D9p) MGC	(D9p) LGPS	ICF4
(D9p) LCAE ✓	(D9p) LCAA	ICF5
LKREG	LKOPT	ICT
(D15p) non	(D15p) non	

MERASTON



Declenchem.: 40.C
Reenclenche.: 30.C
Thermo-Switch 123 : Alim TPU 4: Alim. MGC

TPA ICI1 ICI1 J1151 J1152
LDA
TPE ICI2 ICI2
LDE
LDOE ICI3 ICI3
LDOS
LCM2 ICI4 ICI4
LDM2
LDRE ICI5 ICI5
PM2 ICF1
PM3
LSAZ
LSAJ
LSL
LSRO
MGC
LGPS
LGAJ
LGAK

121.

1014

1024

1034

REM