

**BALDOR® • RELIANCE**

**Ensemble d'infos pièce**

**IDNM3538**

**.5HP,1740RPM,3PH,60HZ,56C,3512M,TENV,F1**

Détail pièce							
Révision:	E	Statut:	PRD/A	No de changement:		Propriétaire:	Non
Type:	AC	Spéc. élec.:	35WGP863	Diagramme CD:	CD0005	Usine de fab.:	
Spéc. méc.:	35T995	Config:	35LYT995	Pôles:	04	Date créée:	04-20-2011
Base:	RG	Date entrée vig.:	11-16-2016	Conducteurs:	9#18		

Specs			
Enclosure:	TENV	Inverter Code:	Inverter Duty
Frame:	56C	KVA Code:	M
Frame Material:	Steel	Lifting Lugs:	No Lifting Lugs
Output @ Frequency:	.500 HP @ 60 HZ	Locked Bearing Indicator:	Locked Bearing
Synchronous Speed @ Frequency:	1800 RPM @ 60 HZ	Motor Lead Quantity/Wire Size:	9 @ 18 AWG
Voltage @ Frequency:	230.0 V @ 60 HZ	Motor Lead Exit:	Ko Box
	460.0 V @ 60 HZ	Motor Lead Termination:	Flying Leads
XP Class and Group:	None	Motor Type:	3512M
XP Division:	Not Applicable	Mounting Arrangement:	F1
Agency Approvals:	UR	Power Factor:	69
	CSA	Product Family:	General Purpose
Auxillary Box:	No Auxillary Box	Pulley End Bearing Type:	Ball
Auxillary Box Lead Termination:	None	Pulley Face Code:	C-Face
Base Indicator:	Rigid	Pulley Shaft Indicator:	Standard
Bearing Grease Type:	Polyrex EM (-20F +300F)	Rodent Screen:	None
Blower:	None	Shaft Extension Location:	Pulley End
Current @ Voltage:	.800 A @ 460.0 V	Shaft Ground Indicator:	No Shaft Grounding
	1.600 A @ 230.0 V	Shaft Rotation:	Reversible: Connected Standard

<b>Design Code:</b>	B	<b>Shaft Slinger Indicator:</b>	No Slinger
<b>Drip Cover:</b>	No Drip Cover	<b>Speed Code:</b>	Single Speed
<b>Duty Rating:</b>	CONT	<b>Motor Standards:</b>	NEMA
<b>Electrically Isolated Bearing:</b>	Not Electrically Isolated	<b>Starting Method:</b>	Direct on line
<b>Feedback Device:</b>	No Feedback	<b>Thermal Device - Bearing:</b>	None
<b>Front Face Code:</b>	Encoder/Feedback Device	<b>Thermal Device - Winding:</b>	Normally Closed Thermostat
<b>Front Shaft Indicator:</b>	None	<b>Vibration Sensor Indicator:</b>	No Vibration Sensor
<b>Heater Indicator:</b>	No Heater	<b>Winding Thermal 1:</b>	None
<b>Insulation Class:</b>	H	<b>Winding Thermal 2:</b>	None

Plaque signalétique NP1162L	
CAT NO	IDNM3538
SPEC.	35T995P863G1
FRAME	56C HP .5 TE
VOLTS	230/460
MAG CUR	1.2/.6 FLA 1.6/.8
RPM	1740 RPM MAX 6000
HZ	60 PH 3 CLASS H
SER.F.	1.00 DES B SL HZ 2
NEMA-NOM-EFF	80 WK2 0.07
BLWR V	PH HZ A
RATING	40C AMB-CONT
DE BRG	6205 ODE BRG 6203
CC	SN

Liste des pièces		
Référence	Description	Quantité
SA221980	SA 35T995P863G1	1.000 EA
RA209116	RA 35T995P863G1	1.000 EA
NS2512A01	INSULATOR, CONDUIT BOX X	1.000 EA
35CB3007	35 CB CASTING W/.88 DIA. LEAD HOLE	1.000 EA
36GS1000SP	GASKET-CONDUIT BOX, .06 THICK #SV-330 LE	1.000 EA
51XB1016A07	10-16 X 7/16 HXWSSLD SERTYB	2.000 EA
11XW1032G06	10-32 X .38, TAPTITE II, HEX WSHR SLTD U	1.000 EA
35EP3100M74	FRONT TENV 203 BRG W/O GRSR W/ THRU SH E	1.000 EA
HW5100A03	WAVY WASHER (W1543-017)	1.000 EA
35EP3300A33	SPL FACE MTD EP -ENCL-205 BRG	1.000 EA
51XN1032A20	10-32 X 1 1/4 HX WS SL SR	2.000 EA
35FH4801G	THRU-SHAFT ENCODER COVER INV/VECTOR F1 &	1.000 EA
WD4129	1.50 X 1.50 GRAY SNAP IN PLUG PROMOULD #	2.000 EA
10XN2520A08	1/4-20X1/2 HEX HEAD CAP	4.000 EA
10XN2520A08	1/4-20X1/2 HEX HEAD CAP	1.000 EA
35CB4521GX	CONDUIT BOX LID KIT	1.000 EA
51XW0832A07	8-32 X .44, TAPTITE II, HEX WSHR SLTD SE	4.000 EA
HW2501D13	KEY, 3/16 SQ X 1.375	1.000 EA
HA7000A04	KEY RETAINER 0.625 DIA SHAFTS	1.000 EA
MJ5004A05	#242-21 LOCTITE GENERAL PURPOSE MED. STR	0.005 EA
85XU0407S04	4X1/4 U DRIVE PIN STAINLESS	2.000 EA
MJ1000A02	GREASE, POLYREX EM EXXON (USe 4824-15A)	0.050 LB
MG1000G27	MED CHARCOAL METALLIC GREY	0.017 GA
HA3100A12	THRUBOLT 10-32 X 7.375	4.000 EA

<b>Liste des pièces (suite)</b>		
<b>Référence</b>	<b>Description</b>	<b>Quantité</b>
LB1119N	WARNING LABEL	1.000 EA
LC0145B01	CONNECTION LABEL	1.000 EA
NP1162L	SS INV UL CSA CC	1.000 EA
36PA1000	PKG GRP, PRINT PK1016A06	1.000 EA
MN416A01	TAG-INSTAL-MAINT no wire (1100/bx) 11/14	1.000 EA

AC Induction Motor Performance Data



**AC Induction Motor Performance Data**  
Record # 34832  
Typical performance - not guaranteed values

<b>Winding:</b> 35WGP863	<b>Type:</b> 3512M	<b>Enclosure:</b> TENV
--------------------------	--------------------	------------------------

Nameplate Data			General Characteristics at 460 V, 60 Hz: High Volt Connection		
Rated Output (HP)	.5		Full Load Torque	1.49 LB-FT	
Volts	230/460		Start Configuration	DOL	
Full Load Amps	1.6/8		Break Down Torque	6.71 LB-FT	
R.P.M.	1740		Pull-Up Torque	4.67 LB-FT	
Hz	60	Phase	Locked-rotor Torque	5.31 LB-FT	
NEMA Design Code	B	KVA Code	Starting Current	6.34 Amps	
Service Factor	1		No-load Current	0.608 Amps	
NEMA Nom. Eff.	80	P.F.	Line-line Res. @ 25°C.	34 Ohms	
Rating - Duty	40C AMB-CONT		Temp. Rise @ Rated Load	54°C	
S.F. Amps			Temp. Rise @ S.F. Load		

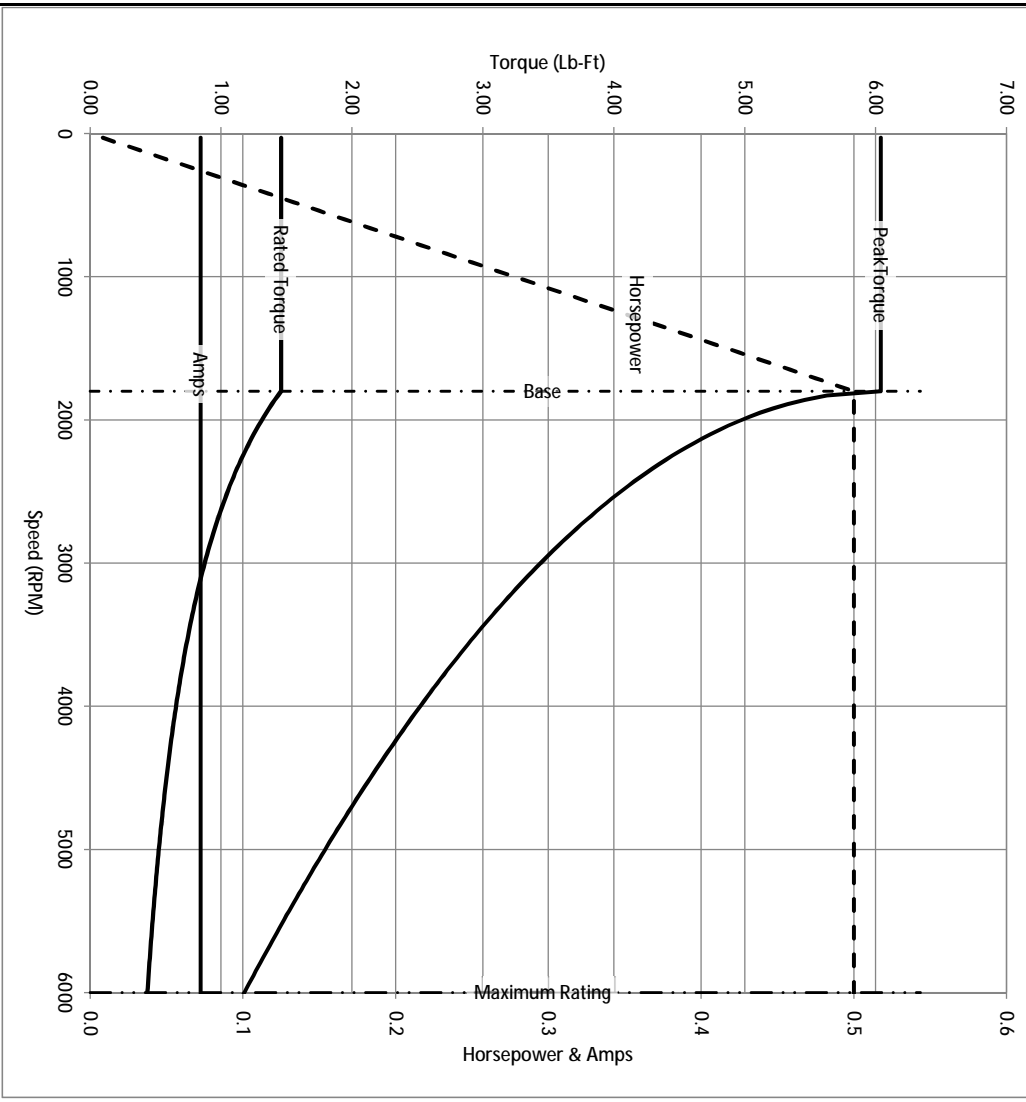
Load Characteristics at 460 Volts, 60 Hz, 0.5 HP

% of Rated Load	25	50	75	100	125	150	S.F.
Power Factor	28	45	59	69	76	81	
Efficiency	59.5	73.8	78.4	80	79.9	78.9	
Speed	1788	1774	1759	1741	1722	1702	
Line Amperes	0.624	0.669	0.744	0.844	0.957	1.1	

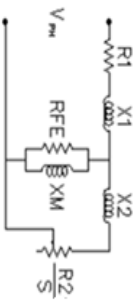
Baldor Electric Company Fort Smith, Arkansas



Catalog	IDNM3538	NP VOLTS	230/460	ENCLOSURE	TENV	WYE CONN EQ CRT OHMS PER PHASE (BASE RATING, 20C)
FRAME	56C	NP AMPS	1.6/ .8	Base Volts	460	R1 16.600
HP	0.5 HP	DUTY	Cont	Base AMPS	0.844	R2 12.600
BASE SPEED	1800	MAX SAFE RPM	6000	Slip Hz	1.97	XM1
PHASE/HZ	3/60	AMB <sup>0</sup> /TNSUL	40/H	WK <sup>2</sup> (lb-ft <sup>2</sup> )	0.0709	X2 9.974
						XM1 365.043



Remarks: Calculated Data



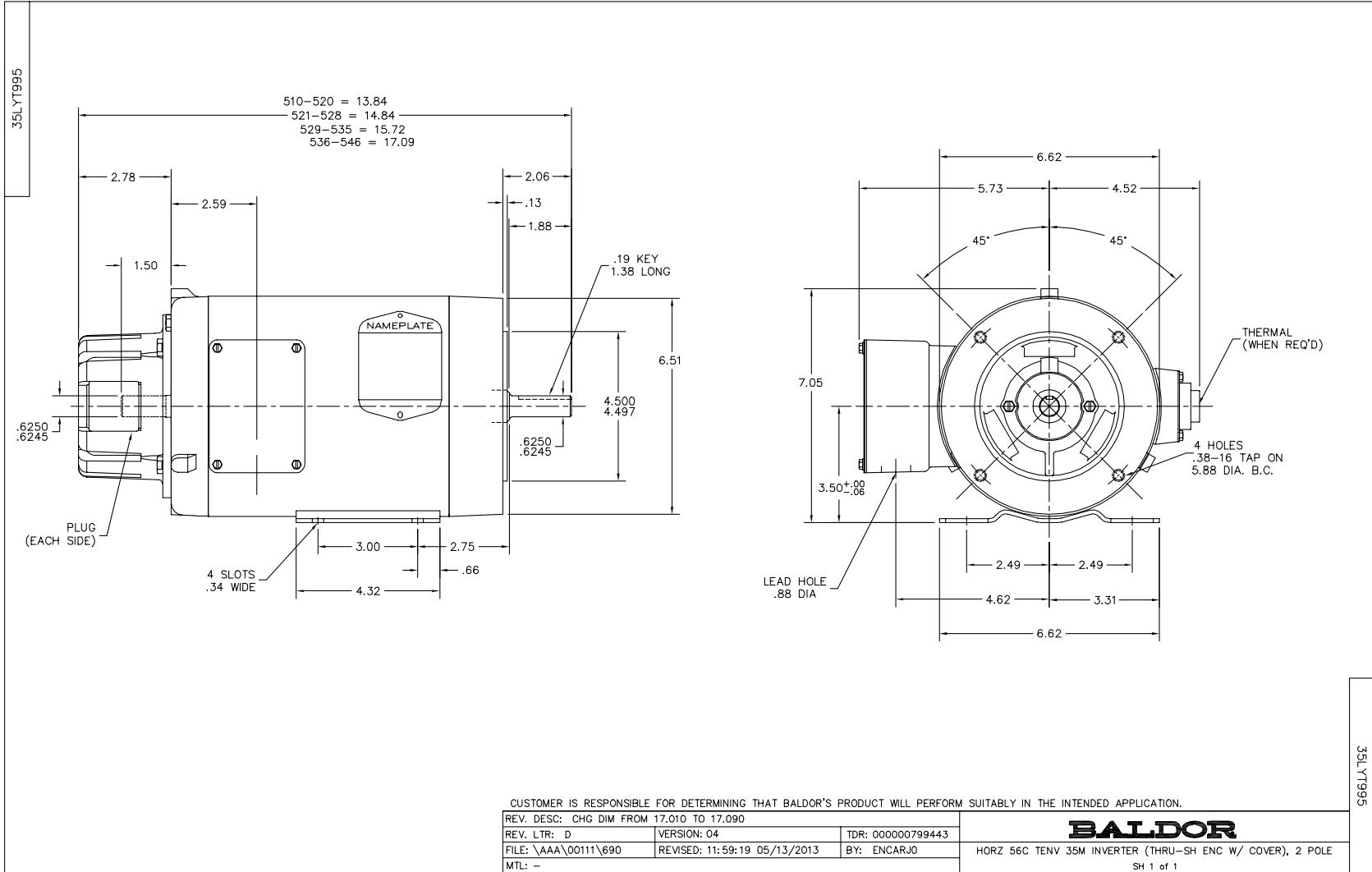
**BALDOR**  
A MEMBER OF THE ABB GROUP

DR BY ENR  
CK BY ENR  
APP BY ENR  
DATE 3/6/2013

A-C MOTOR  
PERFORMANCE CURVES

35T995P863G1  
ISSUE DATE 3/6/2013





CD0005

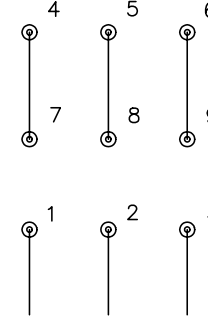


LOW VOLTAGE  
(2Y)



LINE

HIGH VOLTAGE  
(1Y)



LINE

NOTES:

1. INTERCHANGE ANY TWO LINE LEADS TO REVERSE ROTATION.
2. OPTIONAL THERMOSTATS ARE PROVIDED WHEN SPECIFIED.
3. ACTUAL NUMBER OF INTERNAL PARALLEL CIRCUITS MAY BE A MULTIPLE OF THOSE SHOWN ABOVE.
4. LEAD COLORS ARE OPTIONAL. LEADS MUST ALWAYS BE NUMBERED AS SHOWN.

REV. DESC: REVISE TO SHOW OPTIONAL COLORS			
REV. LTR: E	BY: JLP	REVISED: 01/19/99 10:15	TDR: 0171435
9000D		FILE: AAA00005140	MDL: -
		MTL: -	

**BALDOR ELECTRIC Co.**

3PH, DV, 9 LEADS

CD0005