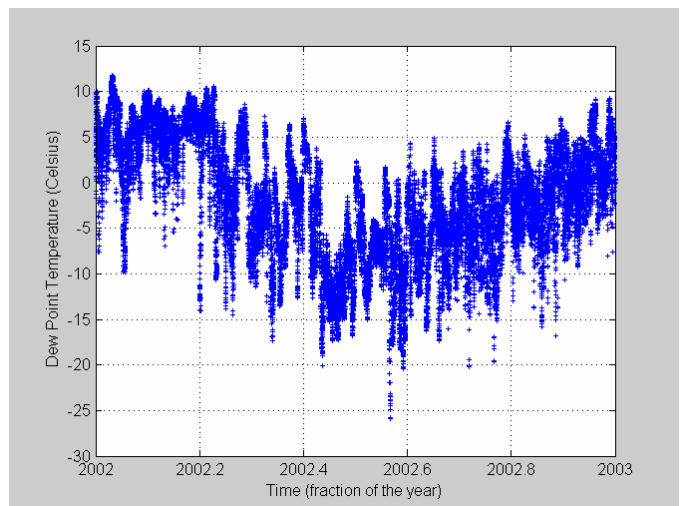
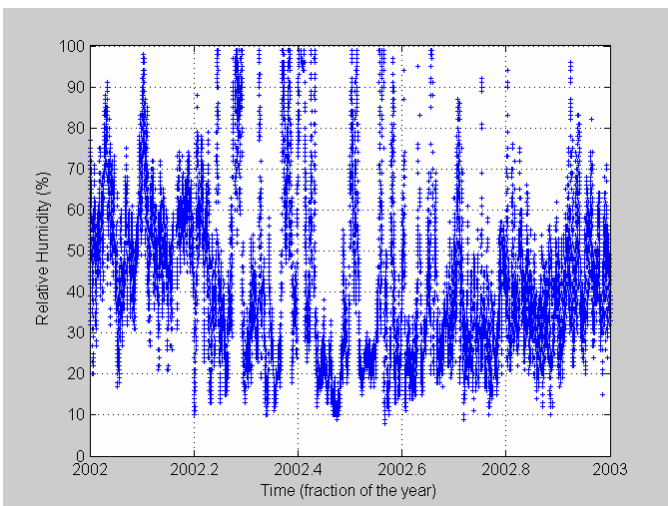
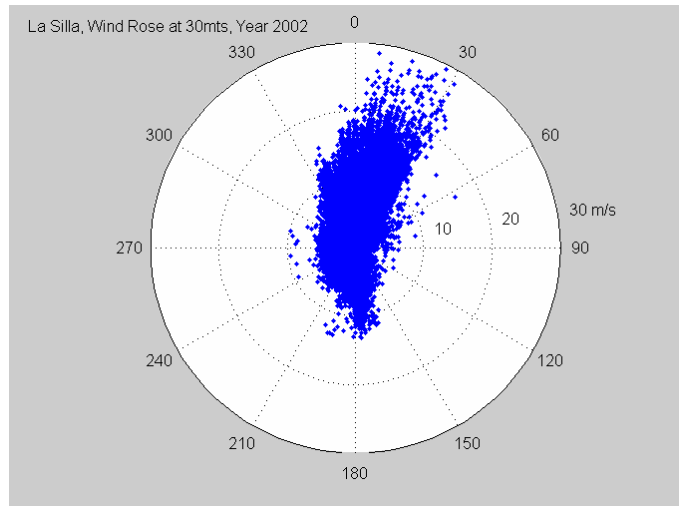
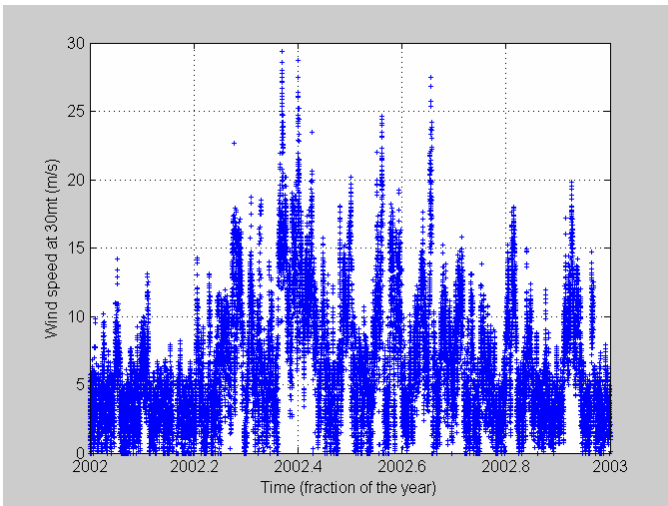
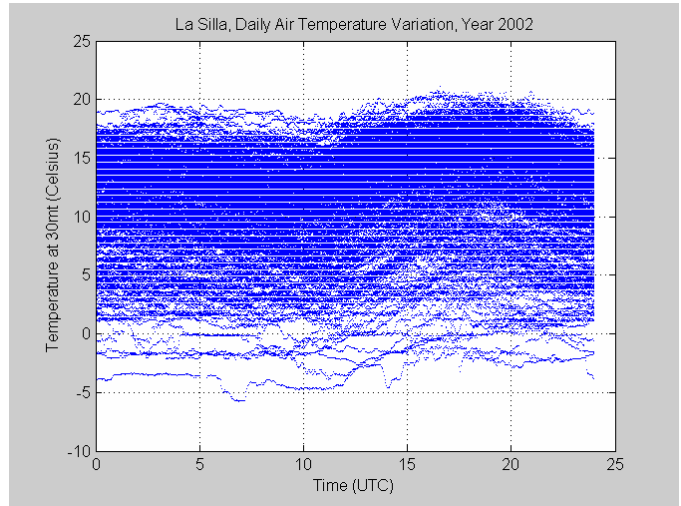
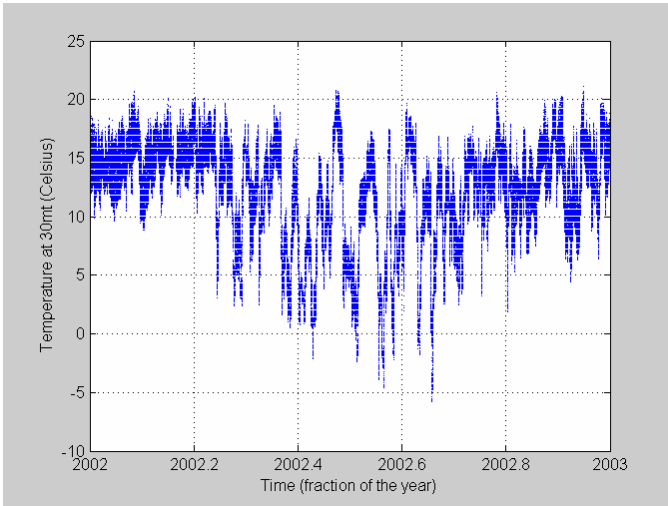
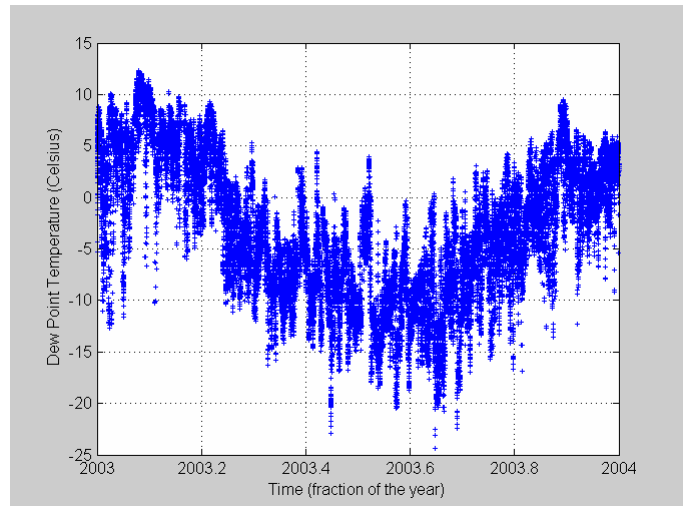
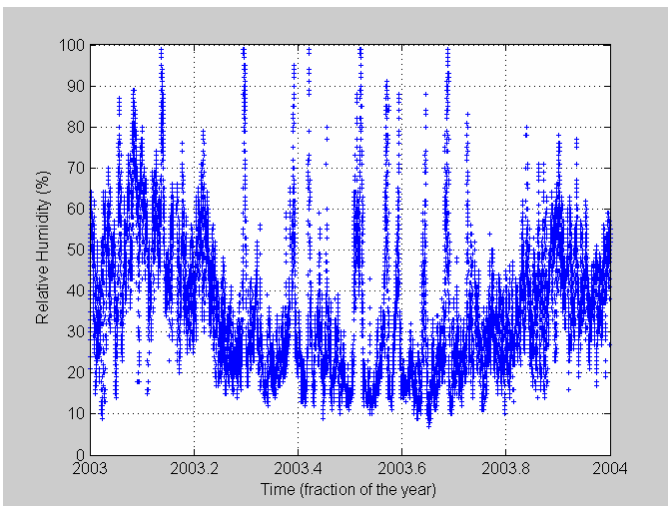
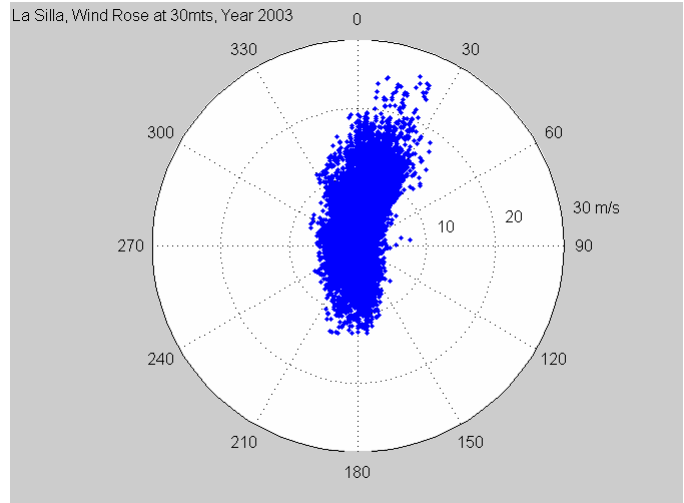
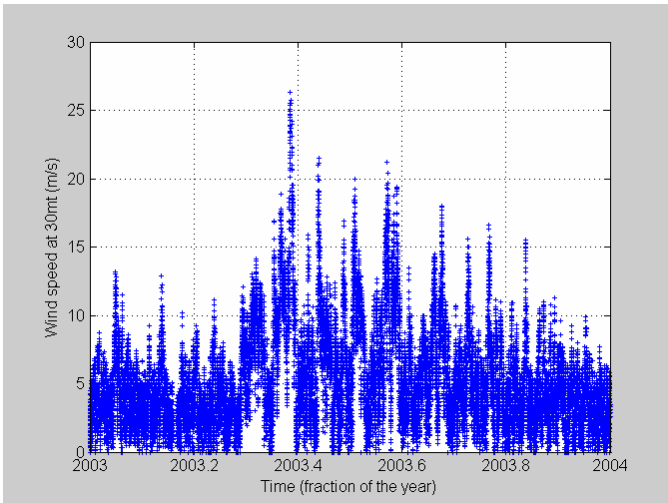
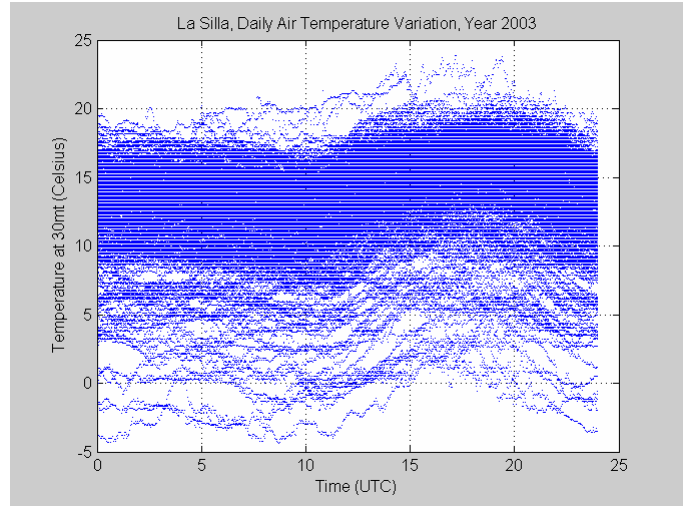
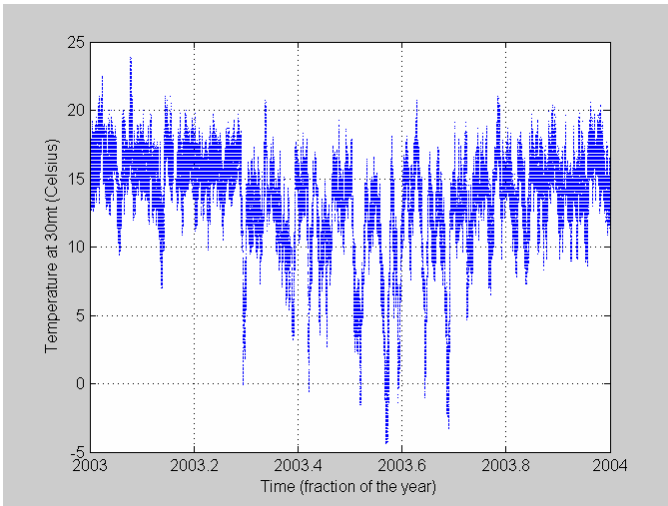


# Wind, Air Temperature, Dew Point and Relative Humidity Statistics at La Silla, 2002 to 2006



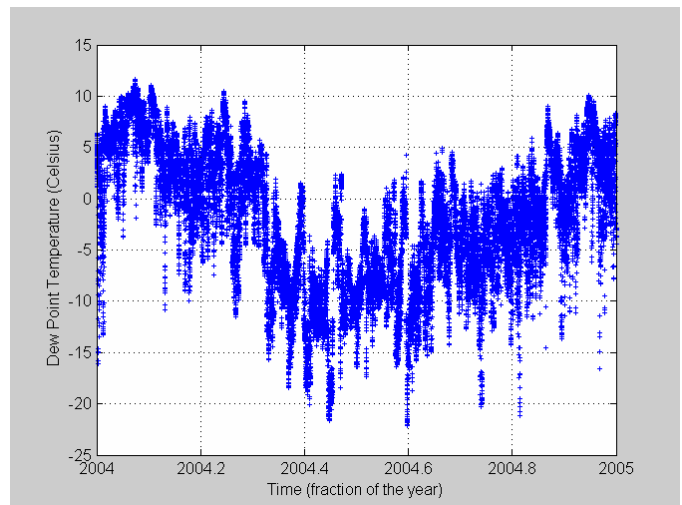
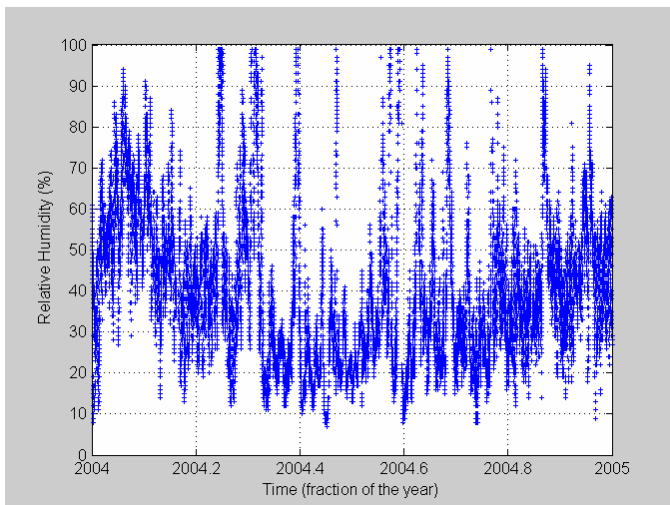
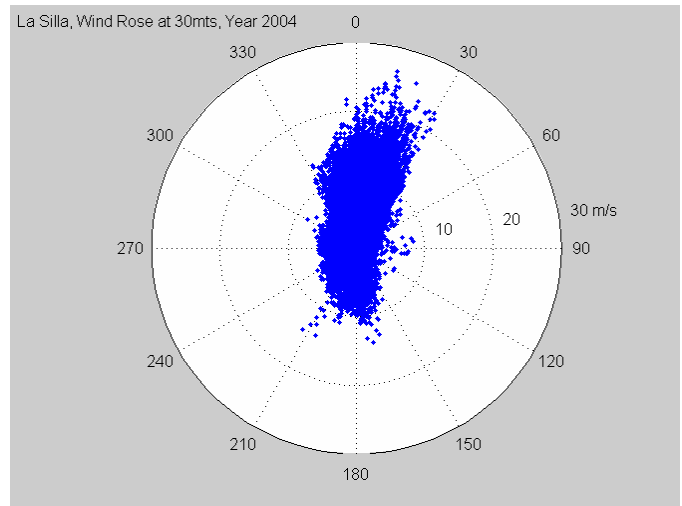
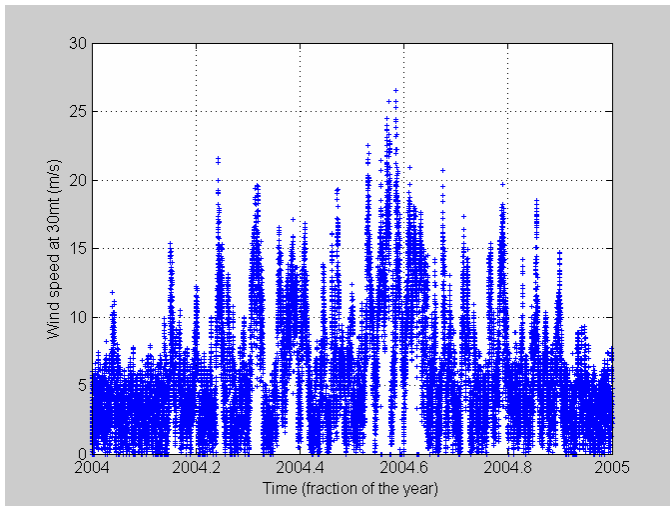
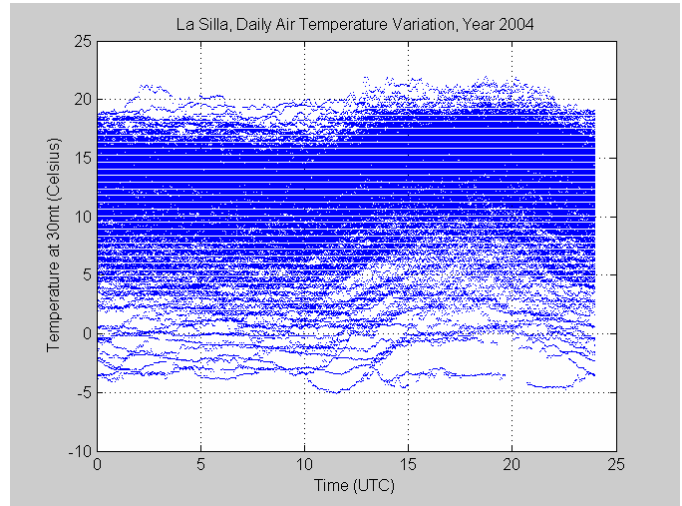
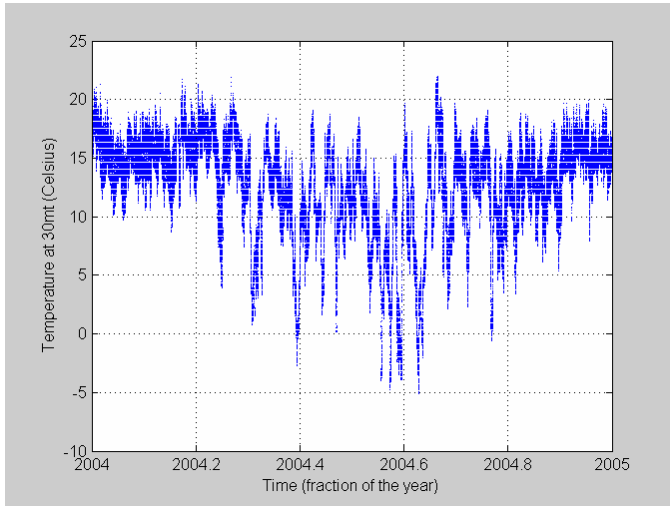
**Wind, Temperature and Relative Humidity Statistics, La Silla 2002**

	<i>minimum</i>	<i>5%</i>	<i>median</i>	<i>average</i>	<i>95%</i>	<i>maximum</i>	<i>samples</i>
Temperature at 30m. (°C)	-5.80	3.20	12.80	11.82	17.50	21.10	259179
Temperature at 2m (°C)	-6.20	3.20	12.60	11.53	16.80	20.00	259179
Relative Humidity at 2m (%)	8	17	38	42	89	100	259179
Dew Point Temperature(°C)	-25.90	-12.80	-1.90	-2.04	7.80	11.80	259179
Wind speed at 30m (m/s)	0.00	0.80	5.20	6.24	14.70	29.40	259179
Wind speed at 10m (m/s)	0.00	1.10	5.40	6.46	15.10	30.40	259179



**Wind, Temperature and Relative Humidity Statistics, La Silla 2003**

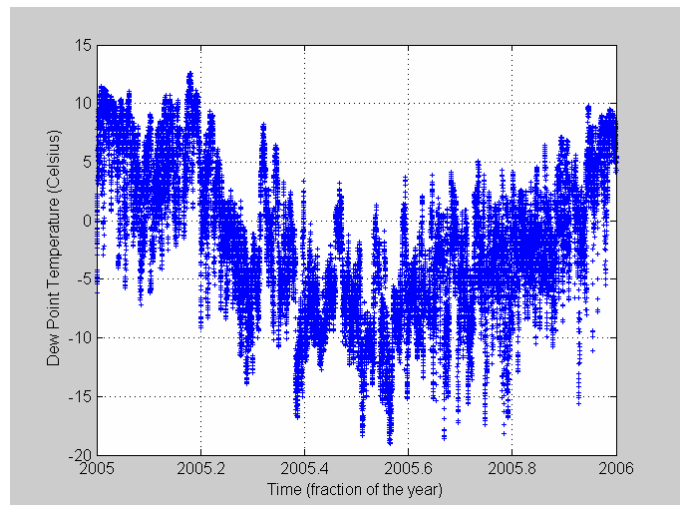
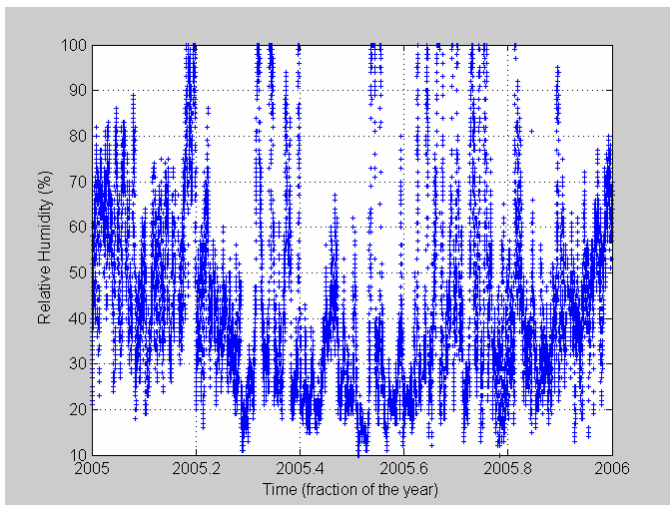
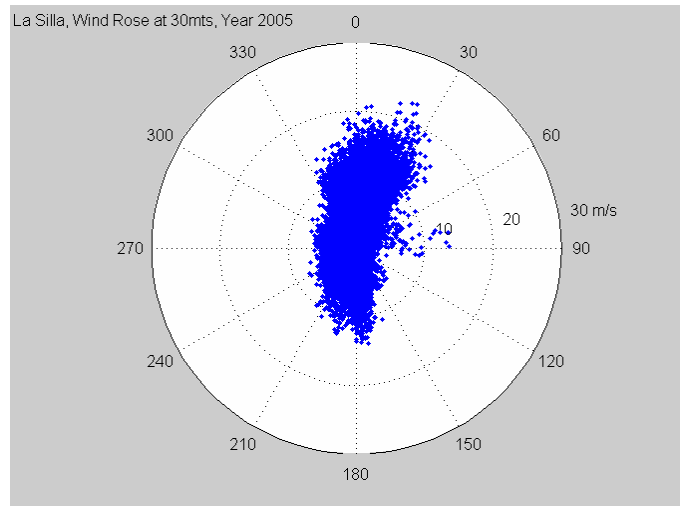
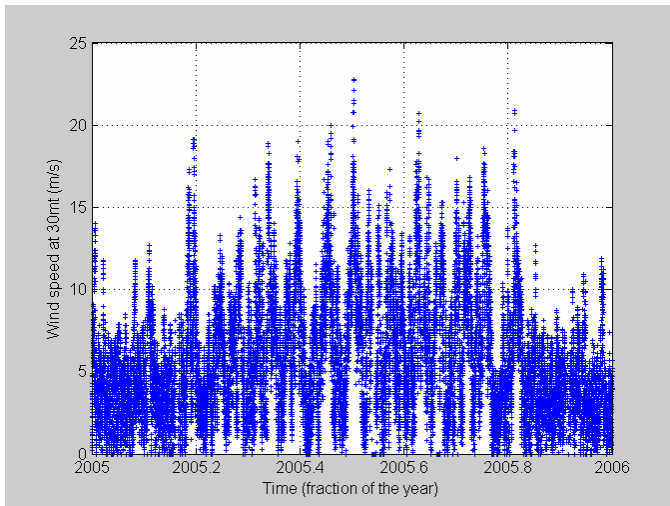
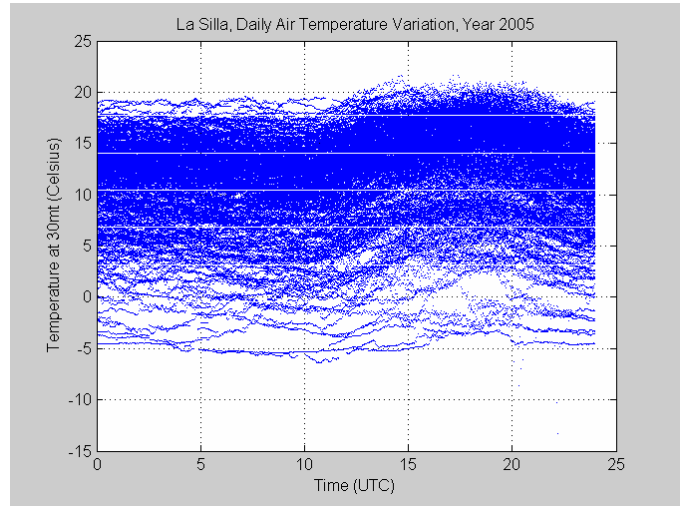
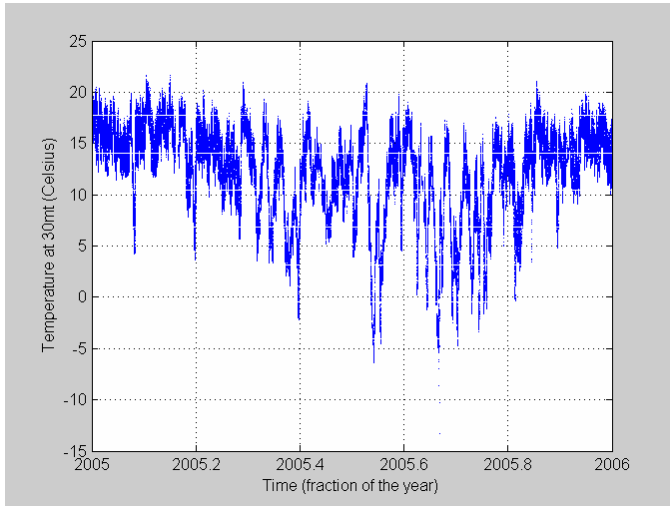
	<i>minimum</i>	<i>5%</i>	<i>median</i>	<i>average</i>	<i>95%</i>	<i>maximum</i>	<i>samples</i>
<b>Temperature at 30m. (°C)</b>	-4.40	5.30	14.00	13.14	17.70	23.90	260943
<b>Temperature at 2m (°C)</b>	-4.10	5.10	13.70	12.82	16.90	22.60	260943
<b>Relative Humidity at 2m (%)</b>	7	14	32	35	65	100	260943
<b>Dew Point Temperature(°C)</b>	-24.40	-14.10	-3.50	-3.24	7.60	12.30	260943
<b>Wind speed at 30m (m/s)</b>	0.00	1.00	4.40	5.26	12.10	26.30	260943
<b>Wind speed at 10m (m/s)</b>	0.00	1.00	4.50	5.41	12.40	27.10	260943



**Wind, Temperature and Relative Humidity Statistics, La Silla 2004**

	<i>minimum</i>	<i>5%</i>	<i>median</i>	<i>average</i>	<i>95%</i>	<i>maximum</i>	<i>samples</i>
<b>Temperature at 30m. (°C)</b>	-5.10	3.40	13.30	12.30	17.80	22.00	259681
<b>Temperature at 2m (°C)</b>	-5.2	3.60	13.00	11.97	17.10	22.00	259681
<b>Relative Humidity at 2m (%)</b>	7	16	36	41	83	100	259681
<b>Dew Point Temperature(°C)</b>	-22.10	-12.90	-2.00	-2.22	8.20	11.60	259681
<b>Wind speed at 30m (m/s)</b>	0.00	0.80	4.60	5.76	14.20	26.50	259681
<b>Wind speed at 10m (m/s)</b>	0.00	1.00	4.70	5.94	14.60	26.80	259681

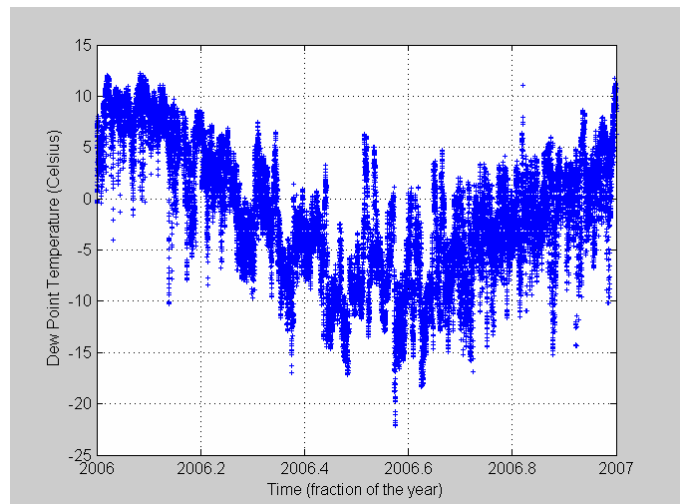
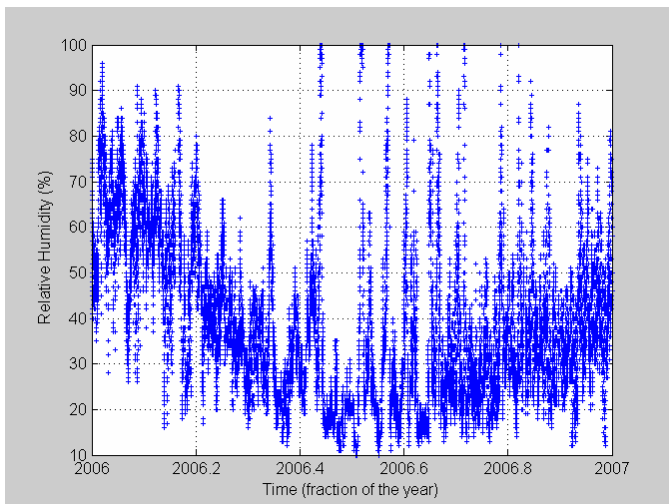
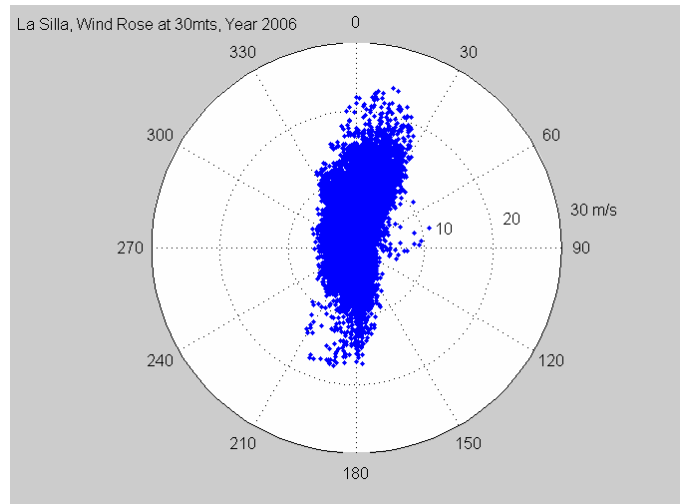
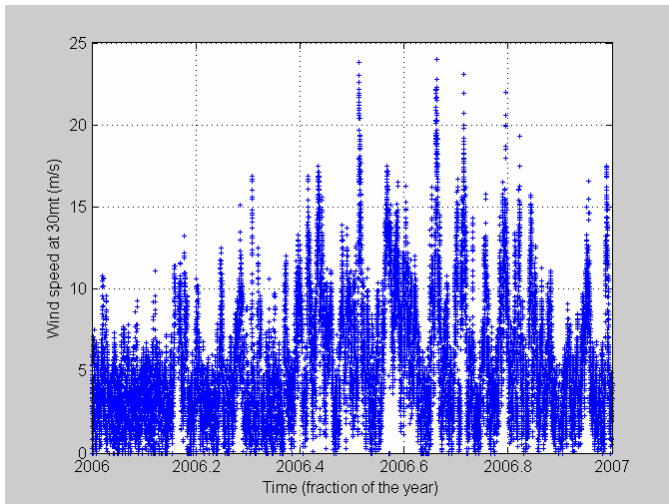
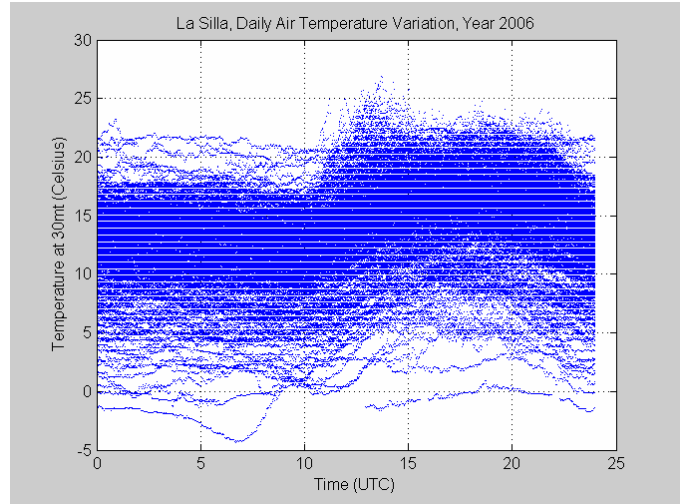
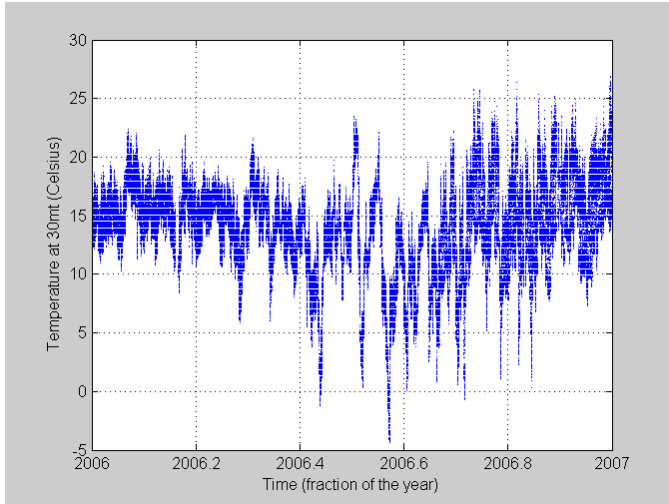
# Wind, Air Temperature, Dew Point and Relative Humidity Statistics at La Silla, 2002 to 2006



**Wind, Temperature and Relative Humidity Statistics, La Silla 2005**

	<i>minimum</i>	<i>5%</i>	<i>median</i>	<i>average</i>	<i>95%</i>	<i>maximum</i>	<i>samples</i>
<b>Temperature at 30m. (°C)</b>	-13.30	3.10	12.90	11.95	17.70	21.60	255770
<b>Temperature at 2m (°C)</b>	-6.60	2.90	12.80	11.59	16.90	20.10	255770
<b>Relative Humidity at 2m (%)</b>	10	17	38	42	89	100	255770
<b>Dew Point Temperature(°C)</b>	-19.00	-11.70	-2.30	-1.96	8.90	12.60	255770
<b>Wind speed at 30m (m/s)</b>	0.00	0.80	4.90	5.65	12.60	22.80	255770
<b>Wind speed at 10m (m/s)</b>	0.00	1.00	5.00	5.83	13.00	23.10	255770





**Wind, Temperature and Relative Humidity Statistics, La Silla 2006**

Wind, Air Temperature, Dew Point and Relative Humidity Statistics  
at La Silla, 2002 to 2006

10

	<i>minimum</i>	<i>5%</i>	<i>median</i>	<i>average</i>	<i>95%</i>	<i>maximum</i>	<i>samples</i>
<b>Temperature at 30m. (°C)</b>	-4.40	6.10	14.00	13.58	19.70	26.90	256709
<b>Temperature at 2m (°C)</b>	-2.70	5.90	13.50	12.84	17.40	23.20	256709
<b>Relative Humidity at 2m (%)</b>	10	16	35	39	73	100	256709
<b>Dew Point Temperature(°C)</b>	-22.10	-12.00	-1.90	-1.56	9.20	12.20	256709
<b>Wind speed at 30m (m/s)</b>	0.00	0.90	4.40	5.35	12.40	24.00	256709
<b>Wind speed at 10m (m/s)</b>	0.00	1.10	4.60	5.53	12.60	24.10	256709